

AUTOMATIC FLYBALL GOVERNOR
 VARIABLE PITCH PROPELLER BLADES
 POWERFUL 400-POUND "GIMT" GENERATOR
 AUTOMATIC VOLTAGE REGULATOR
 15 YEARS OF PROVEN DEPENDABILITY
 "MASTER MIND" CHARGING CONTROL

JACOBS

★ THE WIND ELECTRIC PLANT
THAT HAS *Every* FEATURE

JACOBS WIND ELECTRIC COMPANY

INSTALLATIONS
 FROM THE ARCTIC CIRCLE TO ANTARCTICA
 AND AROUND THE GLOBE
 FOR OVER 8 DECADES

Kalshi Al. Hwar Bimath Palace
 Punjab, India

Cape Town
 South Africa

Admiral Byrd's
 South Pole Camp

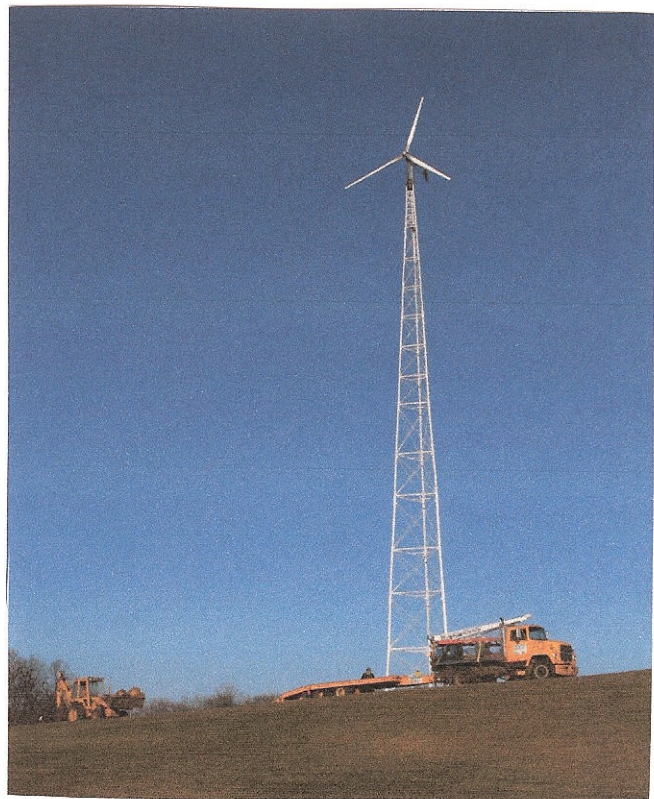
West Indies

Wyoming Ranch Home
 in Bighorn Mountains

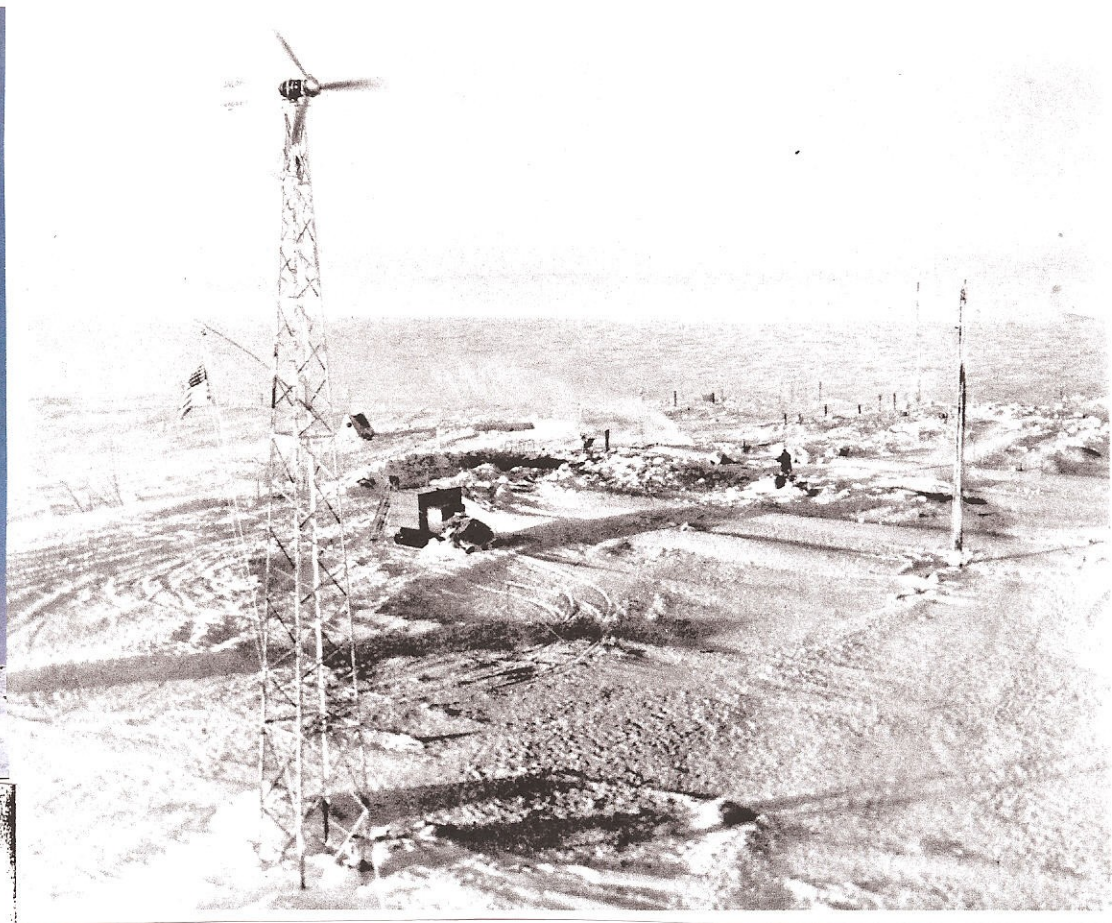
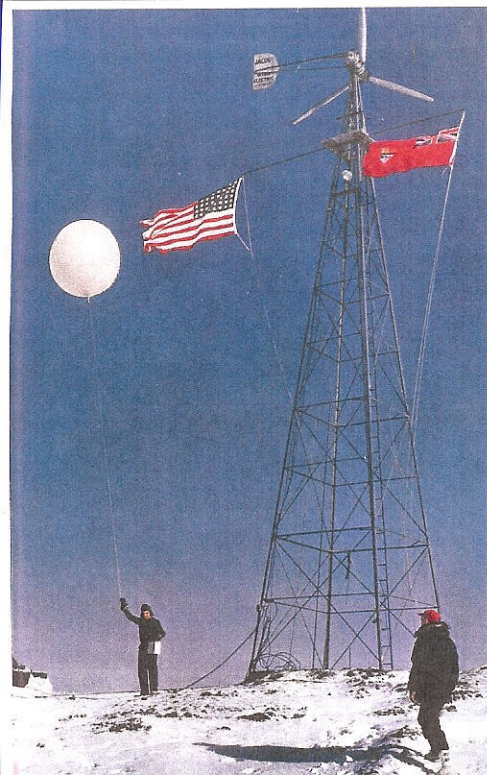
Kaunas, Lithuania

Barcelona, Spain

**TRIED, TESTED AND Acclaimed
THE WORLD OVER!**



ADDITIONAL INFORMATION:
 PAUL JACOBS; GEORGE YANKOUPE
 THE CARLSON TOWERS: 952.449.5114



ABOVE LEFT: JACOBS WIND GENERATOR AT EUREKA, ELLESMERE ISLAND, ARCTIC CIRCLE; **ABOVE:** JACOBS 2.5 KW UNIT AT ADM BYRD'S "LITTLE AMERICA", ANTARCTIC CAMP IN 1934, RAN FROM 1933 TO 1955. **LEFT:** ADM RICHARD BYRD'S LAST VISIT TO "LITTLE AMERICA" 1955 (NOTE THE TOWER IN THE BACKGROUND HAS HAD THE WIND GENERATOR REMOVED BY THE NAVY AND SHIPPED THE WASHINGTON, D.C.- ALSO NOTE THE ONCE 70 FOOT TOWER WAS THEN BURIED BY SNOW TO ABOUT 10'). **BELOW:** JACOBS WIND GENERATORS WERE FEATURED IN THE NATIONAL GEOGRAPHIC MAGAZINE THREE CONSECUTIVE YEARS IN CONJUNCTION WITH NAVY PROJECTS: 1955, 1956, AND 1957.

VOLUME CVII NUMBER FOUR

THE NATIONAL GEOGRAPHIC MAGAZINE

JACOBS NORTH POLE
APRIL 1955
Pages 540

Ohio Makes Its Own Prosperity 435
With Color Map and 46 Illustrations. LEO A. BORAH
29 in Natural Colors E. ANTHONY STEWART

Spain's "Fortunate Isles," the Canaries 485
With Map and 37 Illustrations JEAN and FRANC SHOR
30 in Natural Colors

Photographing the Sea's Dark Underworld 523
With Diagram and 14 Illustrations HAROLD E. EDGERTON

Diving Through an Undersan Avalanche 538
With Diagram and 1 Illustration CAPT. JACQUES-YVES COUSTEAU

Weather from the White North 543
With Map and 31 Illustrations ANDREW H. BROWN
24 in Natural Colors JOHN E. FLETCHER

Patrolling Troubled Formosa Strait 573
With Map and 20 Illustrations

Seventy-two Pages of Illustrations in Color

PUBLISHED BY THE NATIONAL GEOGRAPHIC SOCIETY WASHINGTON, D. C.

\$6.50 A YEAR 65¢ THE COPY

VOLUME CX NUMBER TWO

THE NATIONAL GEOGRAPHIC MAGAZINE

AUGUST, 1956

All-out Assault on Antarctica
REAR ADMIRAL RICHARD E. BYRD
With Map and 46 Illustrations, 32 in Color 141

Boom on San Francisco Bay 184
With Map and 34 Illustrations FRANC SHOR
29 in Color DAVID S. BOYER

Alexander Graham Bell Museum:
Tribute to Genius 227
With 36 Illustrations THE HONOURABLE JEAN LESAGE
4 in Color

Into the Heart of Africa 257
With Map and 3 Illustrations GERTRUDE S. WEEKS

Stalking Central Africa's Wildlife 264
With 15 Illustrations T. DONALD CARTER
13 Paintings in Color WALTER A. WEBER

Seventy-two Pages of Illustrations in Color

PUBLISHED BY THE NATIONAL GEOGRAPHIC SOCIETY WASHINGTON, D. C.

\$7.00 A YEAR 75¢ THE COPY

VOLUME CXII NUMBER ONE

THE NATIONAL GEOGRAPHIC MAGAZINE

JULY, 1957

To the Men at South Pole Station
ADMIRAL BYRD'S LAST ARTICLE 1
With 3 Illustrations

We Are Living at the South Pole 5
PAUL A. SIFLE
With 30 Illustrations, 22 in Color DAVID S. BOYER

Admiral of the Ends of the Earth 36
MELVILLE BELL GROSVENOR
With 18 Illustrations

Flight to Adventure 49
With Map and 73 Illustrations
62 in Color TAY and LOWELL THOMAS, JR.

New Mexico's Great White Sands 113
With Map and 23 Illustrations
20 in Color WILLIAM BELKNAP, JR.

Coronation in Katmandu 139
With Map and 12 Illustrations E. THOMAS GILLIARD
10 in Color MARC RIBOUD

Eighty Pages of Illustrations in Color

PUBLISHED BY THE NATIONAL GEOGRAPHIC SOCIETY WASHINGTON, D. C.

\$7.00 A YEAR 75¢ THE COPY



JACOBS™ 10 KW UNIT - HAWAII - 1981 80N02



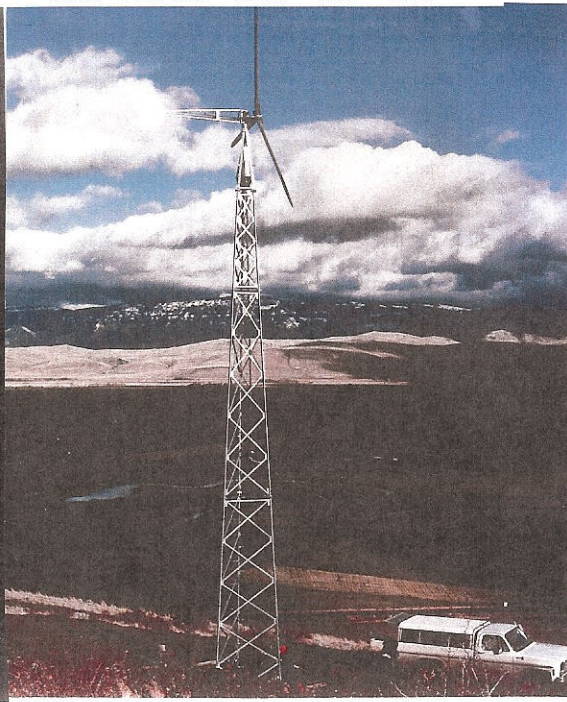
JACOBS™ 10 KW UNIT - OREGON - 1980 80N01



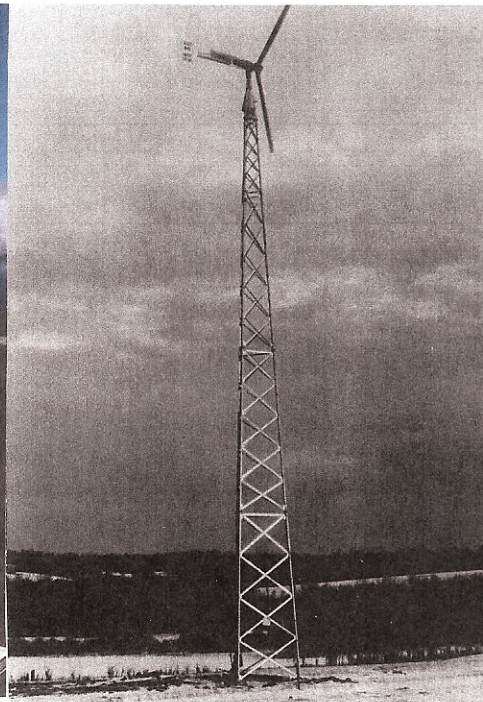
JACOBS™ 10 KW UNIT - RHODE ISLAND - 1980 80N09



JACOBS™ 10 KW UNIT - WISCONSIN - 1981 81N07



JACOBS™ 10 KW UNIT - OREGON - 1982 82N01



JACOBS™ 10 KW UNIT - NEW YORK - 1980 80N05



JACOBS™ 2 KW UNIT - NEW MEXICO - 1952-1975 52P04